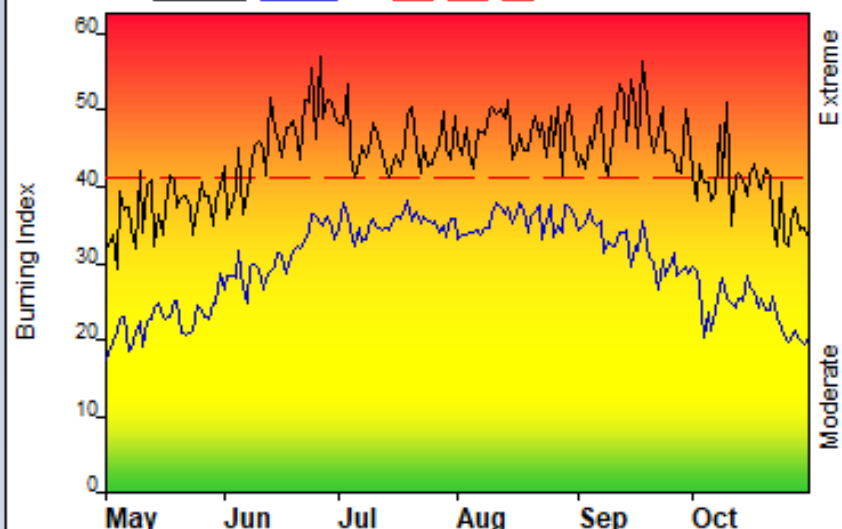


### FIRE DANGER -- Wasatch Mountains

Maximum, Average, and 90th Percentile, based on 17 years data



### Fire Danger Area:

- ◆ Wasatch Mountains
- ◆ 479
- ◆ Wasatch SIG
- \* Meets NWCG Wx Station Standards

### Fire Danger Interpretation:

- EXTREME** -- Use extreme caution
- High** -- Watch for change
- Moderate** -- Lower Potential, but always be aware

Maximum -- Highest Burning Index by day for 2004 - 2020

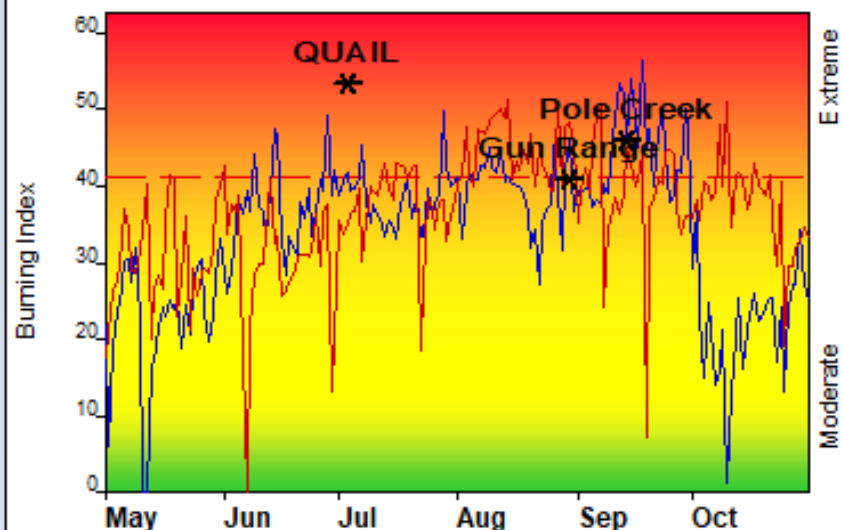
Average -- shows peak fire season over 17 years (3126 observations)

90th Percentile -- 10% of the 3126 days from 2004 - 2020 had an Burning Index above 41

### Local Thresholds - Watch out:

- Combinations of any of these factors can greatly increase fire behavior:
- 20' Wind Speed** over 9 mph, RH less than 13%,
- Temperature** over 89

### Years to Remember: 2018 2020



### Remember what Fire Danger tells you:

- ✓ Burning Index gives day-to-day fluctuations calculated from temperature, humidity, wind, daily temperature & rh ranges, and precip duration.
- ✓ Wind is part of BI calculation.
- ✓ Watch local conditions and variations across the landscape -- Fuel, Weather, Topography.
- ✓ Listen to weather forecasts -- especially WIND.

### Past Experience:

- WIND GUST over 20mph will increase probability of erratic fire behavior and large fire growth
- LAKE EFFECT WINDS will enhance up-slope winds in the afternoon and the downslope in the evening resulting in unexpected fire intensity adjacent to the Great Salt Lake and Utah Lake
- MIRCOBURST WINDS are powerful downdrafts from thunderstorms which can affect the spread rate, intensity, and direction from several miles away