



2011 Teton Interagency Incident Organizer

Incident Name	
Incident Number	
Fire Code	
Other Code	
Unit	

IC Time & Date	
IC Time & Date	

Containment Date & Time	
Control Date & Time	
Out Date & Time	
Final Size	

AAR	<input type="checkbox"/> Completed	Date:
------------	------------------------------------	-------

Directions and Intent:

MOST TYPE 4 AND 5 INCIDENTS ONLY REQUIRE FILLING OUT THE FIRST FEW PAGES -. [In these situations, fill out afterwards when doing your AAR. Red-blocked items are required to be filled in for 30-mile accident prevention (Forest Service.)]

- Intended to provide the IC with a format and focal point to begin processing an incident that is emerging.
- Use until an Incident is out or operating under an IAP.
- Serves as an Incident Workbook used in conjunction with the Incident Response Pocket Guide, “Red Book”, or Fireline Handbook.

IC Signature: _____

IC Signature: _____

Reviewed by: _____

FMO/Duty Officer

Initial Attack Fire Size-Up			
Fire Name:		Legal Location	Town:
IC Name:			Range:
Descriptive Location:		Secs.:	
*Coordinates: Datum:	Deg/Min/Sec Latitude:		
	Longitude		
	UTM:	E:	N:
Reported by:			
*Cause: Human / Lightning		Ownership:	
Fire Investigator Needed? <input type="checkbox"/> No <input type="checkbox"/> Yes on order?			
*Character of Fire:		*Adjacent Fuel Type:	
Smoldering	Torching	Grass/Sage	Heavy Timber
Creeping	Spotting	Aspen	Slash
Running	Crowning	Light Timber	Other
*Spread Potential:		*Slope at Head of Fire:	
Low	High	0-25%	56-75%
Moderate	Extreme	26-40%	76+%
		41-55%	
*Estimated Size:		*Aspect:	
		Elevation:	
*Estimated Windspeed:		Position on Slope:	
		Top	Upper 1/3 Mid 1/3
		Lower 1/3	Bottom
*Wind Direction:		*Special Information	
		Are any structures threatened?	
		Access: (Trail, road, helispot)	
		Other:	
Weather Conditions		Resource Needs	
Clear	Scattered Clouds	On Scene	
Building Cumulus	T-Storms	En Route	
Lightning	Overcast	Additional?	
Showers	Heavy Showers		
*Fuel Type:		Special Equipment Needs	
Grass	Snag	Retardant	Jumpers
Sage	Aspen	Pumps	Engines
Brush	Log/Duff	Bucket work	
Light Timber	Other	Fallers	
Heavy Timber	Slash	Is Water Available?	
Hazards Identified?:		Complexity Analysis "YES" Factors	
Estimated Containment		Date:	Time

*Call into Dispatch Immediately

Risk Management		
Maintain your situational awareness. Ensure compliance with the 10 Standard Firefighting Orders and LCES. Continually monitor the 18 Situations and apply appropriate mitigation. As the incident progresses, continually re-evaluate your situation. When hazards are identified mitigate them or change tactics and or strategy. Refer to the green pages in the IRPG.		
YES	NO	Decision Points
		Controls in place for identified hazards? If no reassess your situation
		Are selected tactics based on expected fire behavior? If no reassess your situation
		Are the current strategy and tactics working? If no reassess your situation

Incident Risk Analysis (215a)			
Division/Group or Segment	Hazardous Actions or Conditions	Mitigations/Warnings/Remedies	
Operational Period			

Incident Complexity Analysis (Type 3, 4, 5)*

Fire Behavior	Yes	No
Fuels extremely dry and susceptible to long-range spotting or you are currently experiencing extreme fire behavior.		
Weather forecast indicating no significant relief or worsening conditions.		
Current or predicted fire behavior dictates indirect control strategy with large amounts of fuel within planned perimeter.		
Firefighter Safety		
Performance of firefighting resources affected by cumulative fatigue.		
Overhead overextended mentally and/or physically.		
Communication ineffective with tactical resources or dispatch.		
Organization		
Operations are at the limit of span of control.		
Incident action plans, briefings, etc. missing or poorly prepared.		
Variety of specialized operations, support personnel or equipment.		
Unable to properly staff air operations.		
Limited local resources available for initial attack.		
Heavy commitment of local resources to logistical support.		
Existing forces worked 24 hours without success.		
Resources unfamiliar with local conditions and tactics.		
Values to be protected		
Urban interface; structures, developments, recreational facilities, or potential for evacuation.		
Fire burning or threatening more than one jurisdiction and potential for unified command with different or conflicting management objectives.		
Unique natural resources, special-designation areas, critical municipal watershed, T&E species habitat, cultural value sites.		
Sensitive political concerns, media involvement, or controversial fire policy.		

If you have checked "Yes" on 3 to 5 of the analysis boxes, consider requesting the next level of incident management support.

Completed (Date/Time) _____ Re Analyzed _____

Changes in Complexity? _____

Type 5 Characteristics: (a) C&G Staff positions are not activated. (b) Resources vary from one to five firefighters. (c) Incident is normally contained rapidly during IA. (d) A written action plan is not required.

Type 4 Characteristics: (a) C&G Staff positions are not activated. (b) Resources vary from single Firefighter to several single resources or a single Task Force or Strike Team. (c) The incident is limited to one operational period in the control phase. Mop-up may extend into multiple periods. (d) A written plan is not required.

Type 3 Characteristics: (a) Some of the C&G Staff may be activated, as well as DIVS/GROP Supervisor and Unit leaders. (b) Resources vary from several single resources to several TFL's/STL's. (c) Incident may be separated into several divisions, but usually does not meet the DIVS/GROP Supervisor position for span or control. (d) May involve several burning periods prior to control, which requires a written action plan.

*Also found in 2011 Interagency Stds for Fire & Fire Aviation Ops – "Red Book", Appendix G

Incident Objectives

1. **SAFETY** of firefighters and public.

2.

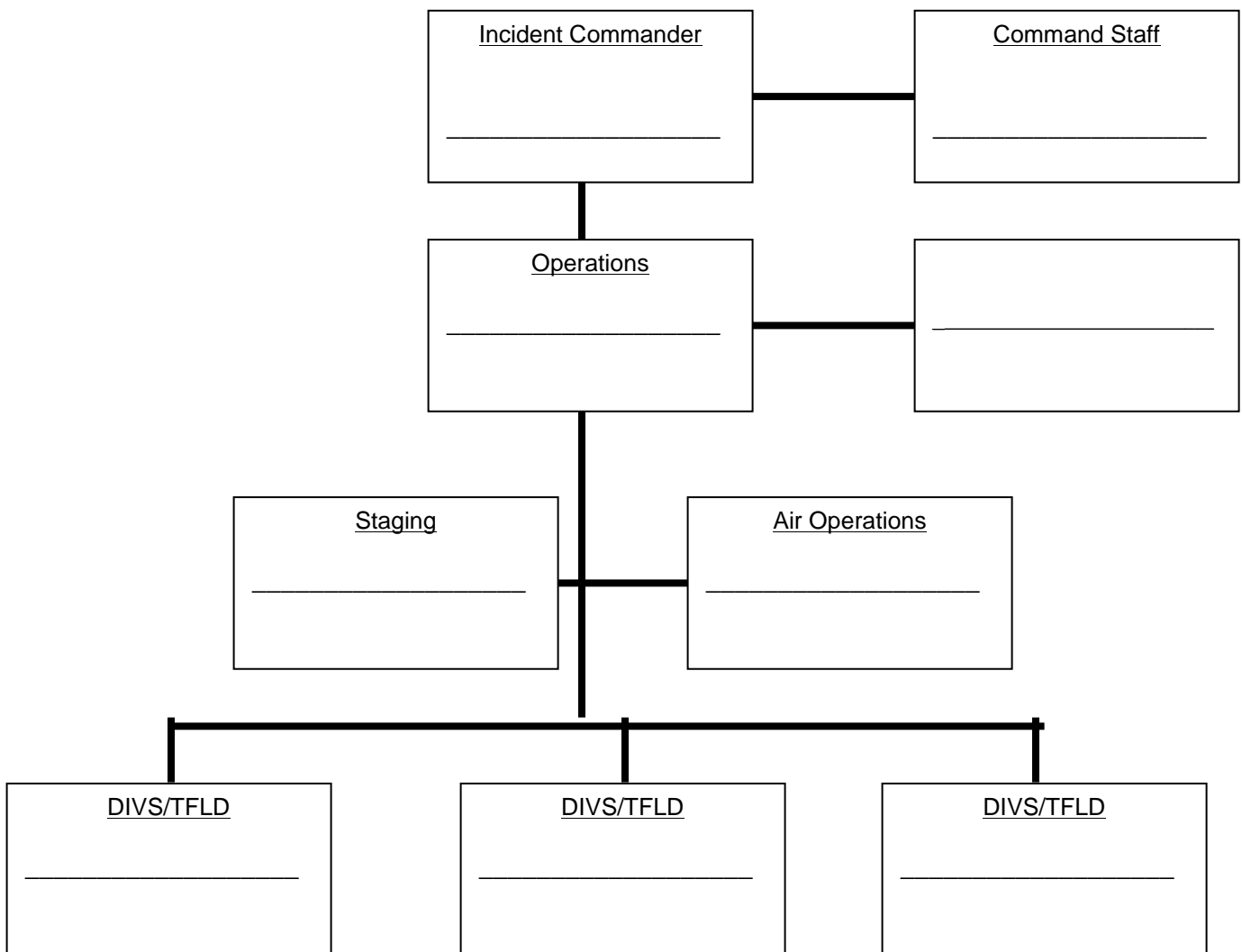
3.

4.

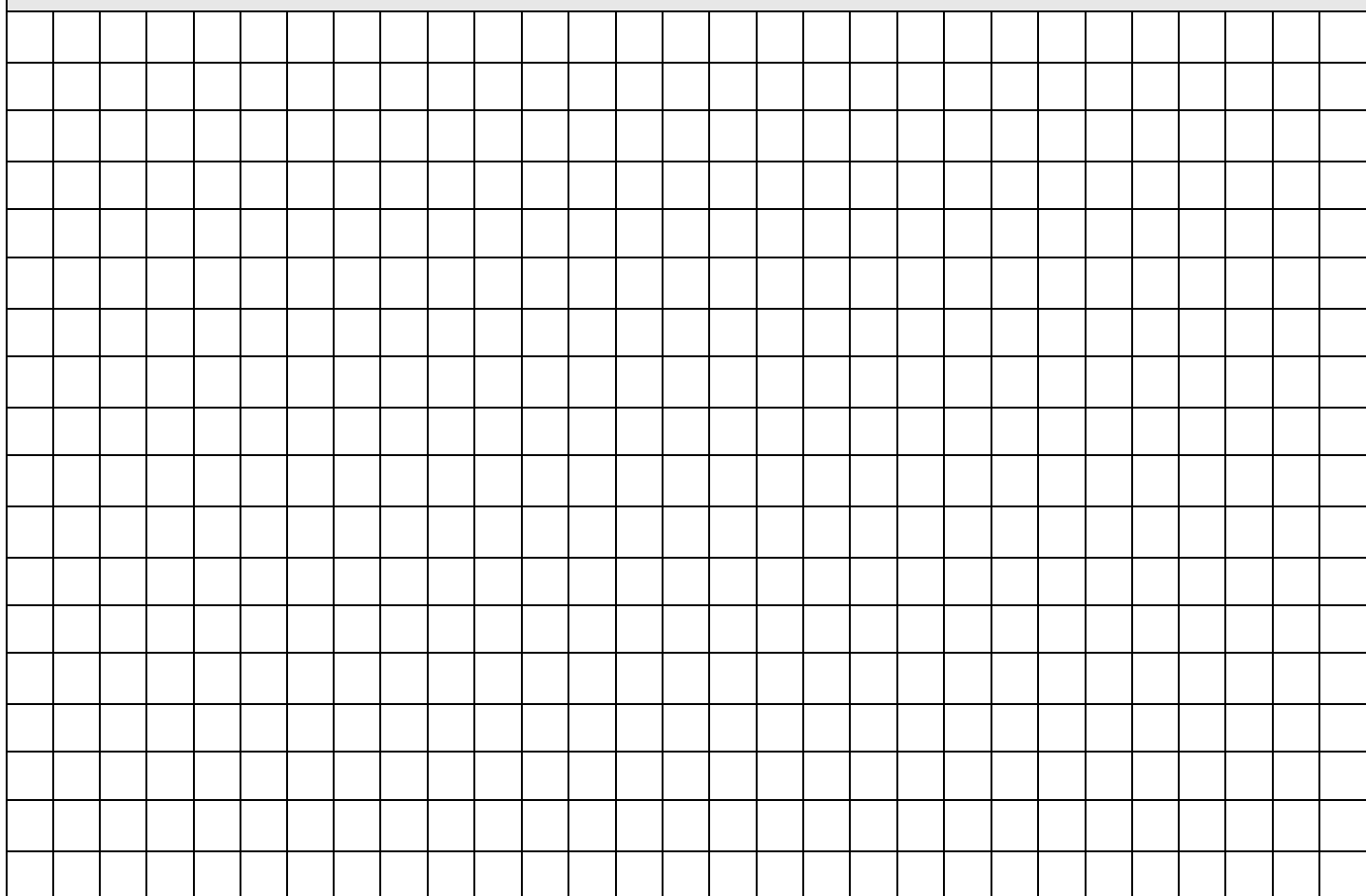
Your goal is to manage the incident and not create another.

(Examples: protect structures, keep fire to east of road, river or ridge)

INCIDENT ORGANIZATION



MAP SKETCH



Prepared by:	Position:	Date/Time
--------------	-----------	-----------

Fire point/perimeter mapped?	GPS Unit info (datum, filename)
------------------------------	---------------------------------

Common Frequencies

A/G 1	168.125	168.125	A/G 2	168.550	168.550
Air-Air	124.475	124.475	FS TAC 2	168.175	168.175
FS TAC 3	164.825	164.825			

Radio Frequencies	
Net	Frequency
Command	<i>Rx</i>
	<i>Tx</i>
Support/Dispatch	<i>Rx</i>
	<i>Tx</i>
Air-to-Ground	<i>Rx</i>
	<i>Tx</i>
Air-to-Air	<i>Rx</i>
	<i>Tx</i>
Tac 1	<i>Rx</i>
	<i>Tx</i>
Tac 2	<i>Rx</i>
	<i>Tx</i>

Spot Weather Forecast, cont'd

	Today	Tonight	Tomorrow
Sky/Weather			
Max Temp			
Min RH			
20' winds			
Ridge Top			
LAL			
CWR			
Haines			
Mix Height			
Trans Winds			
Smoke Disp			

Extended forecast Days 3-5

Work Rest Ratio Documentation Worksheet

This worksheet is designed to help the IC document and calculate amount of rest required to meet the Work/Rest guidelines.

- For every 2 hours of work or travel provide 1 hour of sleep or rest.
- IC must justify and document work shifts exceeding 16 hours and those that do not meet the 2:1 work/rest guidelines -- see below.

Date	Operational Period Start Time	Operational Period Stop Time	Total Hours Worked	Rest Time (document hours when employee or module rested)

Approval for shift lengths exceeding 16 hrs given by:

(Duty Officer or Line Officer **(REQUIRED)**)

Date/ Time Approval Given:

IC Signature:

Date:

Teton Interagency Fire

Bridger-Teton National Forest
National Elk Refuge
Grand Teton National Park



2011 Teton Interagency Fire Incident Commander Delegation and Firefighter Expectations

This letter serves as a delegation of authority for all type 4 and 5 incident commanders, as well as providing expectations for all fire personnel engaged in wildland and prescribed fires:

Protection of life and the safety of the public and emergency responders is the most important objective for every fire. IC's are responsible for completing a complexity analysis at the time of the initial fire size up. Implement the Risk Management Process, as outlined in the Incident Response Pocket Guide. Before Incident Commanders commit personnel they should ask:

- o Is the outcome worth the risk?
- o Is there a smarter way to get a similar result with less exposure?

ICs shall understand Line Officer and Fire Management Officer's intent, and assure that all fire personnel understand this intent. Line officers and FMO may provide additional clarification regarding managing long-duration fires. ICs should provide feedback on the effectiveness of strategies and tactics. ICs will disengage immediately if strategies and tactics cannot be implemented safely and re-engage when ready.

There is no change in the objective for initial attack actions on human-caused wildfire which we will continue to suppress to minimize negative consequences with respect to firefighter and public safety.

Ensure that all firefighting actions are in full compliance with the Ten Standard Fire Orders and mitigation of applicable Watch Out Situations is accomplished; they are firm rules of engagement. All decisions to engage, disengage or re-engage in actions are made in terms of these orders.

All firefighters will work in a professional manner to ensure appropriate representation of our agencies. Foster an atmosphere free of discrimination, sexual harassment and other forms of inappropriate behavior.

Firefighters will be aware of personnel conditions and follow the Work Rest Guidelines. Watch for fatigue, failing attitudes, distractions and personnel issues.

ICs shall ensure personnel on their incident are only assigned to fireline positions for which they are qualified as certified by their employing agency. Ensure trainees have a qualified trainer.

Ensure that all incoming resources as well as those already on the fireline receive adequate briefings.


Ensure implementation of proper food storage policies/procedures.

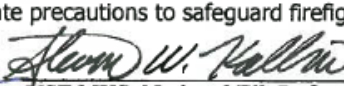
IC's are responsible to update TIDC and the Duty Officer every morning and afternoon on the status of the incident. Immediate notification to TIDC will be made for any significant changes in fire behavior, conditions and all injuries or accidents.

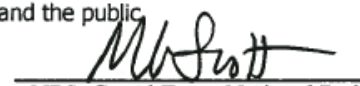
When recommending the declaration of the fire out, coordinate with the Duty Officer on the standards that will apply before demobilizing the fire.

For each incident, the IC is responsible for completing the appropriate sections of the Incident Organizer, conducting an After Action Review (AAR) and turning in that organizer with the fire report. The fire report is due to the Zone Duty Officer/Park AFMO within 10 days of the fire being declared out.

We have the utmost respect for your knowledge and professionalism and appreciate your dedication to the program. You serve in an extremely important role in these programs and the community. Please understand that your actions will be supported in all cases where you take the appropriate precautions to safeguard firefighters and the public.


USFS, Bridger-Teton National Forest
Forest Supervisor


USF&WS, National Elk Refuge
Refuge Manager


NPS, Grand Teton National Park
Park Superintendent

INCIDENT STATUS SUMMARY (ICS-209)

The Incident Commander is responsible to provide Teton Dispatch with enough information to submit an ICS-209 when the incident meets the reporting requirements.

ICS-209 reporting requirements:

- Timber fire of 100 acres or more, or Range fire of 300 acres or more
- Initial mobilization of the local Type 3 IMT
- Additionally any wildfire managed under a strategy other than full perimeter control, that is likely to be active for at least the next 72 hours will require the submission of an abbreviated ICS-209 (following guidance in the Great Basin Mob Guide)

Key information to communicate:

- Size/Area involved (growth since last report)
- Threats in the next 24 hours
 - life/safety any evacuations in progress or planned?
 - structures threatened, type – primary residences, outbuildings, cultural/historic?
 - critical infrastructure, powerlines, energy development, communications towers/repeaters?
- Critical Resource Needs
- Observed fire behavior
- Actions planned for next operational period

Information should be provided to TIDC by 1800 hrs, **PLAN AHEAD!** Communicate with the Duty Officer and TIDC to develop a strategy to submit a 209 to meet timing and reporting requirements.

LOGISTICS

- Food: Plan for 1 case of MRE's for 4 people/day **or** 6 cases/day for 20 person crew
- Water: 3 gal/person, 12 cubies per crew/day
- Fuel: portable pumps 5 gal will run for 4 hrs., chainsaws 1 gal/4 hrs 1 qt oil/2 hrs

Pre-Assembled Water Handling Kits available from the cache in Jackson

PUMP KIT "A"

I MARK 3 PUMP/KIT
15 GALLONS UNLEADED
1 GALLON 2 CYCLE

3000 X 1.5 HOSE
1500 X 1.0 HOSE
1000 X 3/4 HOSE

15 X 1.5 GATED Y's
8 X 1.0 GATED Y's
10 X 3/4 GATED Y's

15 X 1.0 NOZZLES
10 X 3/4 NOZZLES

15 X 1.5-1.0 REDUCERS
10 X 1.0-3/4 REDUCERS

PUMP SUPPORT KIT "B"

2000 X 1.5 HOSE
1000 X 1.0 HOSE
1000 X 3/4 HOSE

10 X 1.5 GATED Y's
5 X 1.0 GATED Y's
10 X 3/4 GATED Y's

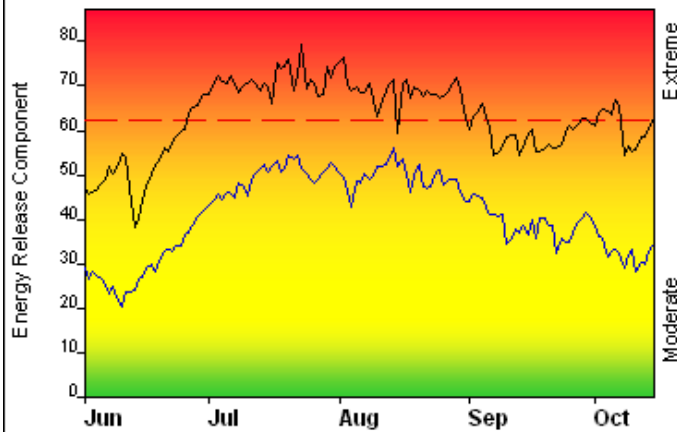
10 X 1.0 NOZZLES
10 X 3/4 NOZZLES

10 X 1.5-1.0 REDUCERS
5 X 1.0-3/4 REDUCERS

Bridger-Teton NF and Grand Teton NP Pocket Card, 2011

FIRE DANGER -- Bridger-Teton/ Grand Teton

Maximum, Average, and 90th Percentile, based on 13 years data



NFDRS Model G best represents dense conifer with dead and down fuels

Fire Danger Area:

- ◆ Teton Interagency Zone Western Wyoming- Grand Teton, Bridger-Teton
- ◆ NWS Zones 414,415,416
- ◆ Teton SIG- Snider, Grand Teton, Halfmoon
- * Meets NWCG Wx Station Standards

Fire Danger Interpretation:



- EXTREME** -- Use extreme caution
- (Caution)** -- Watch for change
- Moderate** -- Lower Potential, but always be aware

Maximum -- Highest Energy Release Component by day for 1998 - 2010

Average -- shows peak fire season over 13 years (1735 observations)

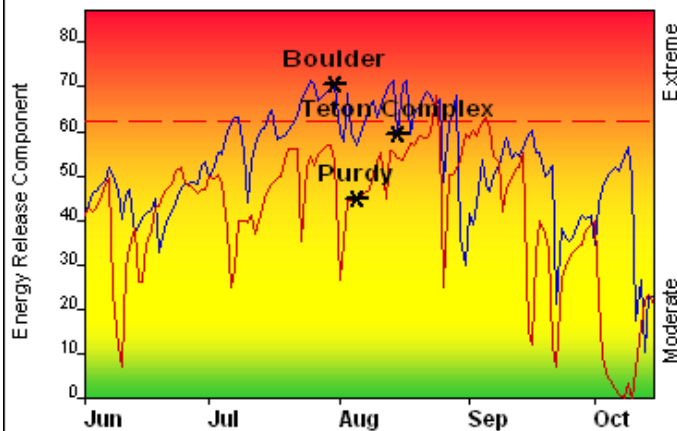
90th Percentile -- Only 10% of the 1735 days from 1998 - 2010 had an Energy Release Component above 62

Local Thresholds - Watch out:

Combinations of any of these factors can greatly increase fire behavior:

- 20' Wind Speed over 20 mph, RH less than 17%,
- Temperature over 86, 1000-Hour Fuel Moisture less than 12
- Haines Index 5 or 6

Years to Remember: 2000 2006



Fuel Model: G - Short-Needle (Heavy Dead)

Remember what Fire Danger tells you:

- ✓ Energy Release Component gives seasonal trends calculated from 2 pm temperature, humidity, daily temperature & rh ranges, and precip duration.
- ✓ Wind is NOT part of ERC calculation.
- ✓ Watch local conditions and variations across the landscape -- Fuel, Weather, Topography.
- ✓ Listen to weather forecasts -- especially WIND.

Past Experience:

The Boulder Fire ignited and burned over 4,500 acres during peak ERC periods in late July 2000

Later in 2000, the Teton Complex, consisting of five large fires, starting on July 15th, grew to over 9,600 acres.

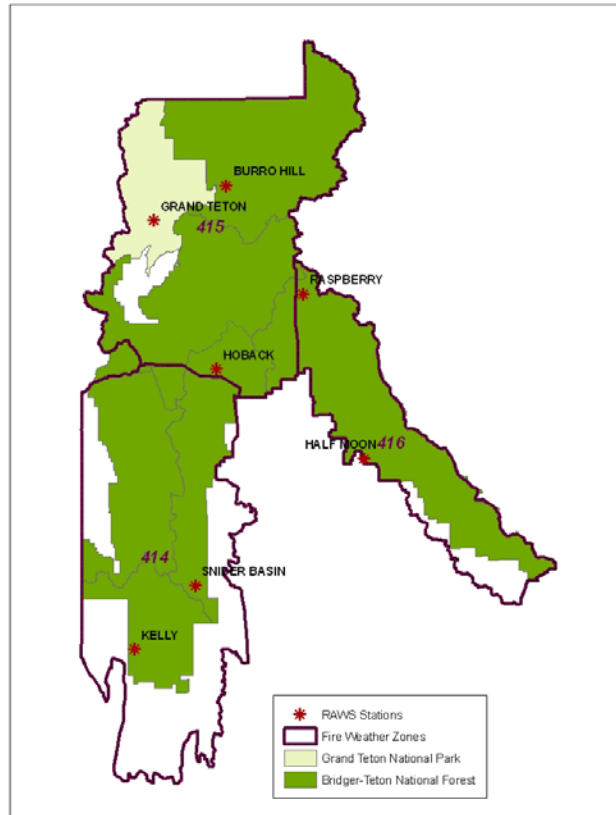
In 2006, the Purdy fire started during moderate burning conditions, but fire behavior escalated as ERCs increased through the next few weeks, eventually burning 16,906 acres.

Responsible Agency: Grand Teton NP and Bridger-Teton NF

FF+4.1 Beta 06/06/2011-13:47 (C:\Documents and Settings\lanorman\My Do...10_18_2010)

Design by NWCG Fire Danger Working Team

NWS-Riverton Fire Weather Zones and Fire RAWS locations (GTP/BTF)



Commonly Used Phone Numbers (Use 307 for the area code)

Teton Dispatch Center **FIRE** - 739-3630 **All Risk** - 739-3301 **Expanded** - 739-5618

Bridger-Teton National Forest

Tobin Kelley	739-5576 / 413-2028
Andy Norman	739-5571 / 413-2033
Martha Williamson	739-5024/ 413- 0537
Heidi Zardus	739-5079 / 413-2030

East Zone

Paul Hutta	367-5735 / 413-0542
Mark Randall	367-5711 / 413-0978
Justin Kaber	276-5827 / 413-0438

West Zone

Kirk Strom	828-5116 / 200-1767
Dwayne Gibbons	886-5335 / 413-2029
Ben Banister	828-5117 / 200-1762

North Zone

Mike Johnston	739-5425 / 413-2022
Chris Vero	739-5418 / 413-2035
Jason Lawhon	739-5413 / 413-0518

Grand Teton National Park

Chip Collins	739-3310 / 690-4400
Mack McFarland	739-3313 / 690-0573
Claire Scolnick	739-3311
Traci Weaver	739-3692 / 690-1128
Diane Abendroth	739-3665 / 690-4303
Deb Flowers	739-3319 / 690-7536
Ron Steffens	739-3675 / 690-3967

National Elk Refuge 733-9212

Teton Helibase 739-5557

After Action Review

The climate surrounding an AAR must be one in which the participants openly and honestly discuss what transpired, in sufficient detail and clarity, so everyone understands what did and did not occur and why. Most importantly, participants should leave with a strong desire to improve their proficiency.

- An AAR is performed as immediately after the event as possible by the personnel involved.
- The leader's role is to ensure skilled facilitation of the AAR.
- Reinforce that respectful disagreement is OK. Keep focused on the *what*, not the *who*.
- Make sure everyone participates.
- End the AAR on a positive note.

What was planned?

What actually happened?

Why did it happen?

What can we do next time? (Correct weaknesses/sustain strengths)

Ensure this Incident Organizer is submitted to the appropriate Zone Duty Officer with the AAR.